

Shepparton & Goulburn Valley Official Visitor Guide



Shepparton • Mooroopna • Tatura • Murchison • Dookie

**SHEPPARTON
& GOULBURN
VALLEY**

COME *See* FOR YOURSELF
sheppandgv.com.au



Gulpa Gaka Yorta Yorta Woka

(Welcome to Yorta Yorta Country)

Acknowledgment of Country

We, Greater Shepparton City Council, acknowledge the Yorta Yorta Peoples of the land which now comprises Greater Shepparton, we pay our respect to their tribal elders, we celebrate their continuing culture and we acknowledge the memory of their ancestors.

Cover image: Mural painted by Adnate, featuring Aunty Margaret Tucker (MBE) and Nora "Nanny" Charles - two significant past local elders. Vehicle courtesy of Museum of Vehicle Evolution.

CONTENTS

This digital guide is an interactive PDF. To jump to any section of the guide, click a title below in the contents list. To return to the contents page simply click any page number throughout. Website addresses are also hyperlinked, click on any website name to explore more.

04 / PLACES TO EXPLORE

11 / HISTORY & HERITAGE

14 / ARTS & CULTURE

20 / EVENTS

28 / ATTRACTIONS & ENTERTAINMENT

42 / EAT & DRINK

56 / SHOPPING

67 / BUSINESS SERVICES

68 / ACCOMMODATION

77 / GETTING AROUND

79 / MAPS

sheppandgv.com.au



**Country towns,
global village**



DISCLAIMER: Greater Shepparton City Council including their officers, agents and contractors have made every endeavour to ensure the details appearing in this publication are correct at the time of printing, but accept no responsibility for any inaccuracy or misdescription, whether by inclusion or omission. The publisher does not accept any responsibility for subsequent change or withdrawal of prices, details or services shown and these are subject to alteration without notice. Any standard of accommodation and / or services contained in this publication are indicative only of a certain class and are based upon information provided to the publisher. Accordingly, the publisher makes no representation or guarantee in relation to the standard, class, or fitness for purpose of the accommodation or service. Some businesses/attractions are operating different hours and services that may not be reflected in this publication. Contact the businesses/attractions direct (or check their recent social media updates), otherwise the Visitor Centre staff would be happy to assist.

Printed on Forest Stewardship Council (FSC) certified paper from responsibly managed, FSC-certified forests. Published August 2023.

PLACES to EXPLORE



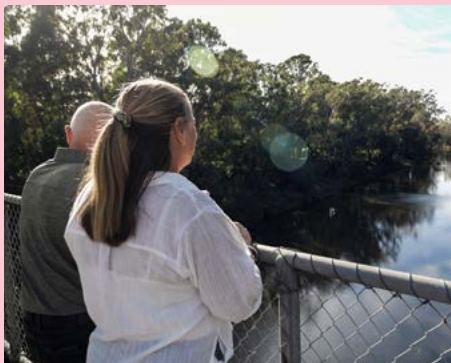
Shepparton

At the junction of the Broken and Goulburn Rivers, Shepparton is the heart of this beautiful, naturally productive landscape.



Explore our region of unique and connected townships.

An easy drive, delivers you to games of country football, old fashioned hospitality, and welcome smiles. Mouth-watering meals are found in all corners, and special experiences are revealed with the changing seasons. From summer fun at Merrigum Splash Park, to Mother's Day blooms in Murchison and expansive views of spring canola in Dookie.



Reveal remarkable stories, from the internment camps of Tatura and Murchison, which underpin the migrant communities we see reflected in the culture and community of the region today. To trash turned into treasure at the Australian Botanic Gardens Shepparton, where a tip turned botanical paradise weaves stories of the region into its architectural plantings and winding pathways.

Small townships hold special memories of times past, from the everyday to unusual. Tales like Murchison meteorite immortalised, with friendly locals sharing their own memories. Significant moments are recorded for the next generations, with 'The Flats' walk, and Aboriginal Street Art providing invitations to learn from elders past, and opportunity to understand the important stories of our First Nation's culture and history.

Take the time to explore and be rewarded.

This thriving city filled with culture and character, encourages you to connect with a richer, more colourful experience of regional Victoria. Major events, diverse cultural offerings and community celebrations bring people to Shepparton all year round.

The iconic local landmark of Shepparton Art Museum (SAM), a striking, architecturally designed building, houses one of Australia's most important collections of historical and contemporary ceramics, plus historical paintings and contemporary art in all media, with a focus on contemporary and Indigenous Australian Art. Co-located, Kaiela Arts celebrates the diversity of local Aboriginal artists, with exhibits showcasing both traditional and modern applications.

Public art in abundance provides a creative connection to our history. First nations' elders are immortalised through the Aboriginal Street Art project, and Moooving Art cows provide a cheeky nod to our important agricultural industry.

The Museum of Vehicle Evolution (MOVE), a world class transport museum, reflects the region's past, through exhibits of cars, trucks, bicycles, and buses, plus the iconic Furphy Museum, and the Loel Thomson Costume Collection. Collections tell stories from the ordinary, to the absurd, including classic rides and chrome bumpers from days gone by.

The beautiful natural landscapes of Victoria Park Lake and the Goulburn River are perfect backdrops for a picnic, a paddle, or throwing in a line, and an extensive network of shared pathways encourages exploration in all directions.

Shepparton is the perfect base for an extended stay.



Mooroopna

Minutes from Shepparton with its own unique identity, Mooroopna welcomes you to explore Yorta Yorta Country.



Wide open streets provide a welcome rest stop at all times of day, with the streetscape featuring a bronze statue immortalising local legend Cyril 'Jack' Findlay, one of Australia's most celebrated Grand Prix motorcycle racers, as well as a substantial war memorial featuring heritage imagery and distinct rotunda. The precinct comes to life after dark with the illumination of the war memorial panels, tree lighting and colour changing water tower.

Take time to explore the town's centre where you will enjoy an eclectic mix of dining and retail stores. The more adventurous can tackle the highly regarded golf course, challenging for even the most experienced golfer. Arts and culture lovers will enjoy performances at Riverlinks



Westside, with an ever changing and diverse program of live theatre and music events, or connect with the town's history through displays at Mooroopna Heritage Museum and other community exhibitions.

Younger visitors can burn off excess energy at KidsTown Adventure Playground, where five acres of outdoor play space features giant slides, mazes and disc golf, catering for children of all physical abilities, including some wheelchair accessible equipment. This location is also the start of 'The Flats' walk, with interpretive signage telling the story of the Walk-off from Cummeragunja in 1939. This significant moment in local Aboriginal history protested restrictive controls placed on Aboriginal people at the time.

The local Aboriginal culture is further expressed through Yorta Yorta artists and the Bigula Country Aboriginal Street Art. These colourful artworks visible from the main street pay testament to how the community has continued to thrive, embracing and sharing their culture and history.

History, culture and art; there is so much to explore in Mooroopna.



Tatura

Founded on the prosperity of irrigated agriculture and evolving over time, the community of Tatura has continued to thrive.



Surrounding farmland offers an enticing glimpse of the season's freshest produce, from cherries, tomatoes and pink lady apples. Mosaic murals in Stuart Mock Place vibrantly display the pictorial history of the township, and the town's museum further highlights the regions industrious past, as well as its significant war time history.

An RV friendly town, Tatura provides convenient respite and stopover for van and RV travellers. The rest stop connects directly through to the picturesque main street lined with ornamental pears. Host to butchers, bakers and small shopfronts turning a lively trade, there's a myriad of treasures to be uncovered, including the butteriest pastries and pies.

Water tower artworks commemorate the town's significant wartime history, with images depicting Sir John Monash and striking poppy designs.

To the west, cemeteries and memorials to the German wartime camps commemorate interns housed in the region during the war.

North of town, find Cussen Park where gentle pathways provide access to bird hides, and boardwalks. The park is home to a significant grey headed flying fox population.

From food to flying foxes, wartime to water, there's much to experience in this small town.



Murchison

On the banks of the Goulburn River, Murchison is a small town gem with a depth of history and beauty just waiting to be discovered.



The culture and history of Murchison is evident in the buildings scattered throughout the township, including the historic properties of Days Mill and Thornebridge, to the more modern art deco Railway Hotel. Enticing treats of Murchison Bakery fuel a walk beside the river, with lecterns and viewing platforms framing views of the Goulburn.

Vibrant Mooving Art cows link you to one of the region's legendary tales, a meteorite that showered the town in 1969, with the Murchison Heritage Centre proudly displaying fragments and sharing other stories of the town's past.

South of town, the Italian Ossario and war cemetery provides a strikingly beautiful memorial to Italian Prisoners of War who died in internment camps.

Further embrace Italian culture with the warm hospitality of Sandra and Guido Vazzoler at Longleat Wines. Weekend bookings are vital for their cellar door restaurant, where La Zingara, a large scale mosaic by local artist Angie Russi overlooks the vineyard that features Italian varietals.

Nature lovers can cycle or walk the Murchison Rail Trail, a short, scenic ride through landscape featuring the significant river red gum wetlands of Doctors Swamp. Or head to Avonlea Flowers, Australia's largest cut flower farm for a bountiful bouquet of blooms.

Come see Murchison, an inviting place to unwind and explore.



Dookie

A quintessential back road locality, Dookie demonstrates just how many unique experiences can be hidden in one small town.



Dramatic seasonal changes can be viewed from atop Mount Major, with the Mulana Nin Iyoga and telegraph paths attracting walkers and photographers any time of year. From glorious golden canola in spring, to vibrant green pasture and the burnished Dookie red earth, the surrounding agricultural land forms a vibrant patchwork in all directions.

Art is embedded deeply in this creative community which features a diversity of public artworks, from colourful murals on the nomadic silos to the quirky blooming gum; all you can explore from the town's centre via a gentle stroll or cycle on the Dookie rail trail.

Take your time to explore the eccentric Dookie Emporium, bursting with

history and curios and a perfect perch for a good coffee. The Gladstone Hotel is a favourite amongst locals for a meal, with live music drifting occasionally from the beer garden.

Further afield find Rye at Tallis, a fantastic location for indulging in a big bold Dookie Red wine whilst overlooking the dramatic peaks of the Great Dividing Range. This reimagined cellar door has evolved into a welcoming wine bar, with plenty of outdoor space for the warmer weather and a wood fire inside for cooler months.

Plan an escape to enjoy the annual Grounded festival at Dookie Quarry, where the dramatic stone cliffs act as a natural amphitheatre and backdrop for one of the region's most loved musical events.

A day in Dookie is a day well spent.



1 CAFÉ CULTURE

Casual dining is well catered for with cafes, bakeries and coffee roasters featuring local produce and international flavours.

Top 5 for business visitors

2 GET OUTSIDE

Walk it off, take to the lake to stretch your legs and clear your head.



3 AFTER 5PM

Hit Fryers Street food strip to grab a bite at the end of the day with a diverse range of dine in and take away available.



LOG ON 4

Co-working spaces make working away from home a breeze, try The Play Lab or Hub on High.

See page 67



5 TRAIN IT IN

Improved access to the region by train makes this a convenient option for the regular visitor.

STORIES to TELL



A patchwork of history is woven from many threads of a diverse and varied past across Shepparton and the Goulburn Valley.

Water has played a pivotal role in the evolution of the region, with the Goulburn and Broken Rivers winding a lazy path through the landscape and watering countless dairy, orchard and pastoral properties that have prospered.

These farming communities have grown the region into the agricultural powerhouse it is today. Feeding and flavouring the nation, the region's fresh and processed produce can be found on shelves of supermarkets across Australia and the world. Irrigation and agricultural history is on show at the Tatura Museum,

and Day's Mill in Murchison is a striking relic of past agricultural processes.

The Museum of Vehicle Evolution (MOVE) tells a different side to the region's history, of the thriving transport industry that has evolved in tandem with agriculture. The museum transports you to yesteryear, featuring vehicles of all shapes, types and sizes. From muscle cars, to bicycles, to trucks, buses and more, the stories of local legends are proudly displayed. The Loel Thomson Costume collection explores the very fabric of life in days gone by in a colourful display.

From old wineries to punts and post offices, the memory of times past lives on in the many museums, with passionate locals waiting to share their special tales.

COME Hear FOR YOURSELF



MERRIGUM MUSEUM



111 Waverley Ave, Merrigum
merrigummuseum@gmail.com
www.facebook.com/Merrigum

Enter via the 1905 built Rodney Store and explore the historical precinct including two general stores, a residential home, blacksmiths shop, wash house, machinery and shearing sheds, mudbrick dairy, log hut and more!

Open the 2nd Sunday of each month or by appointment. To book call (03) 5855 2330.



SHEPPARTON RSL



Filled with original wartime relics, from across all conflicts, the award-winning displays are truly fascinating with something for young, curious minds through to seasoned history buffs.

There are static displays featuring weapons, medals, trench art and priceless silverware from the 59th Battalion, with the main window display ever-changing, in order to showcase the vast collection of memorabilia donated by local families.

Guided talks available. For more information, please email mark.stephens@sheppartonrsl.com.

Open Mon to Sat from 9am and Sun from 10am.

(03) 5820 4100
 88 Wyndham St, Shepparton
www.sheppartonrsl.com



HISTORICAL SOCIETY OF MOOROOPNA INC



0428 252 144 (for appointments)
 30 Park St, Mooroopna
hsmrna@live.com
www.hsm.org.au

The Society's museum preserves and displays items, documents and photographs from Mooroopna's past, and items associated with the history of the Mooroopna Hospital (now GV Health).
Open Wed 11am - 3pm or by appointment.



MURCHISON HERITAGE CENTRE



4 Stevenson St, Murchison 0475 018 743
murchison-historical-society@hotmail.com
www.murchisonhistoricalsociety.wordpress.com

The Murchison Heritage Centre presents authentic historical records relating to the area including the famous 1969 Murchison Meteorite. We offer a variety of experiences and groups are welcome.

Open Sat 10am - 12.30pm or by appointment. Closed winter months, refer website for details.



TATURA IRRIGATION & WARTIME CAMPS MUSEUM



Experience the fascinating history of the seven Internment and POW camps in this area during WW1, with unique materials on display, artwork, photographs and research as well as local history and the history of irrigation in the Goulburn Valley.

Open every day from 1pm - 3pm. Closed Good Friday and Christmas Day.

(03) 58 242 111
 49 Hogan St, Tatura
taturamuseum@gmail.com
www.taturamuseum.com



SHEPPARTON HERITAGE CENTRE



154 Welsford St, Shepparton (03) 4831 8659

Shepparton Heritage Centre collects, preserves and maintains Shepparton's historical records and artefact collection. The museum houses over 7,000 items with focused exhibitions and displays changing regularly. Engaging all age groups with indoor and outdoor displays. Providing activities for the whole family, schools and community groups to enjoy. **Open Tues to Sun 10.30am - 4pm.**

ARTS & CULTURE



Shepparton and Goulburn Valley is a cultural melting pot of galleries, festivals, music, exhibitions and workshops reflecting the vibrant and diverse communities of the region.

Dive into hands-on workshops or events that lean into the diverse culture of our region, from African drumming, to women's weaving, ceramics and sculpture, there's nothing like fully immersing yourself in the experience and getting your hands dirty. Both big and little art and culture lovers are catered for at Shepparton Art Museum with little

hands workshops and the Children's Gallery catering for artists of all ages. Guided cultural experiences for groups are offered with a decidedly local flavour, learn about aboriginal culture at Bangerang Cultural Centre or experience a half or full day indigenous fishing tour with Burnanga Indigenous Fishing Club. Cafes walls, buildings and even cows all become canvases for artworks across the region. Explore the side streets and laneways of Shepparton, Mooroopna, Tatura and other small towns to experience a diversity of street art. Enjoy your cuppa with the backdrop of an exhibition at a local café or head out into the smallest of our localities in the search of your favourite moooving artwork. Art is everywhere in this creative city.

1 SHEPPARTON ART MUSEUM

Australia's most important collections of historical and contemporary ceramics, along with Australian art in all media. *See page 18*



Top 5

for the cultural appreciator



2 BANGERANG CULTURAL CENTRE

See the unique collection of indigenous art and artefacts explaining the wide and rich culture of the local people.



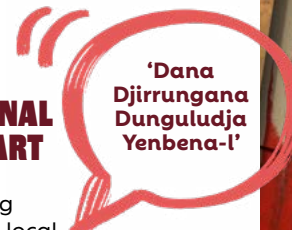
3 THE MUSEUM OF VEHICLE EVOLUTION

A must-see world-class transport museum displaying motor cars, motorbikes, trucks, buses, and much more. *See page 30*

4 KAIELA ARTS

Experience, understand and connect with local Aboriginal culture through Art. *See page 16*

5 ABORIGINAL STREET ART



Street art celebrating and recognising the local Aboriginal history and culture within the region. 'Proud, Strong, Aboriginal People'. *See page 39*





► Clay turtles. Photo by Kayla Frizzell.



◀ Woven wall piece by Suzanne Atkinson.

▼ Inside the gallery. Photo by Greater Shepparton City Council.



Kaiela Arts

Experience local Aboriginal art and stories on Yorta Yorta Country.



▲ 'Yorta Yorta' by Tammy-Lee Atkinson.

Kaiela Arts offers visitors an opportunity to view and purchase authentic Aboriginal art. We are one of only two Aboriginal Art Centres in Victoria.

Our work drives important outcomes for local Aboriginal artists and strengthens our community by sharing culture, learning from our past and empowering future generations.

▼ Kaiela Arts staff and artists
Tammy-Lee Atkinson,
Jack Anselmi, Tari Dean
Atkinson and
Ally Knight.



► Ceramic pendants by Jack Anselmi.



▲ 'Plenty of water' vase by Jack Anselmi.



Our studio space is used by artists to explore traditional and contemporary techniques, putting different ideas together with lessons from land and nature to create high quality artwork and increase the visibility of contemporary Aboriginal culture in Victoria.

We host regular exhibitions and events throughout the year.

Trading Hours

Mon, Wed, Thu, Fri 10am - 4pm
Sat 10am - 3pm

03 5821 9842

Shepparton Art Museum,
530 Wyndham St, Shepparton

www.kaielaarts.org.au

Photos courtesy of Kaiela Arts unless otherwise noted.



Shepparton Art Museum (SAM) is an outstanding regional art museum located on Yorta Yorta Country overlooking Victoria Park Lake.

SAM has 4 major exhibition spaces, including a dedicated Children's Gallery, and showcases over 18 exhibitions annually. The museum highlights national and international artists, along with items from its ever-growing collection that spans more than 4,000 artworks.

During your visit, stop by the SAM Shop to discover the hand-picked selection of artist-designed wares and take something special home with you.

With amazing views, enriching exhibitions and programs, SAM is an experience not to be missed when exploring the Goulburn Valley.



Leon Schoots.



Cam Matheson.



Cam Matheson.



Mikea Guseli.





Tim Griffiths.

Free entry. Open 6 days.
(closed Tuesdays)
Weekdays 10am - 4pm
Weekends 10am - 5pm

sheppartonartmuseum.com.au

Phone (03) 4804 5000

  530 Wyndham St, Shepparton VIC 3630

Government
Partners



Learning &
Engagement partner



sam
Shepparton Art Museum

EVENTS to THRILL



People come from all over the state, country and world to meet in Shepparton & Goulburn Valley for fun and festivity all year round.

You will share the best in produce, culture, sport, art, music and more. From BMX racing to horse shows, to car clubs and exhibitions. Come together with your friends or make new ones, when you pick an adventure from our events calendar.

The region is the most culturally diverse in Victoria, with each and every culture having their own unique way of celebrating and sharing. You will find a kaleidoscope of festivals, cultural events and celebrations that provide an opportunity to learn – from end of harvest celebrations, religious feasts, festivals and more.

Experience first-hand the authentic and unexpected stories of this region. You can hear it in the music, taste it in the food and see it in the colourful characters of the community. Discover something new each time you visit.

COME *Celebrate* FOR YOURSELF



1 GROUNDED AT THE QUARRY

Experience the natural acoustics of the Dookie Quarry in December. See page 23

3 FULL ON FLAVOUR

Taste culture amongst community at Fryers Street (page 26), Albanian Harvest (page 24) and St Georges Road Food Festivals held annually.



Top 5 for the fun-time follower

2 CONVERGE ON THE GOULBURN

Two day festival where you can connect via a kaleidoscope of experiences.



4 CELEBRATE THE NEW YEAR

Jump into the new year with a bang at Mooroopna's New Year's Eve festival.



5 FOLLOW THE SUN TO ARTY PARTY

Plan a visit to experience the annual Shepparton Festival, or become a regular at the monthly SAM at Sunset.





WHOO WHOO WALK ABOUT CULTURAL TOURS



Curious about Indigenous Australian culture, but don't know where to start? Here is a simple and vibrant introduction to knowing a bit more about Aboriginal history in the Goulburn Valley.

A contemporary Australian walkabout is an immersive Aboriginal cultural experience for travelers. Hosted by Craigmuir Lake House and Aboriginal guide Avalon, come and learn the traditional customs and practices that sustained the local Aboriginal communities.

Craigmuir Lake House
 16 Kalimna Dr, Mooroopna
 0402 606 481
www.craigmuirlakehouse.com
evolutionwhatthat@hotmail.com

CRAIGMUIR
 LAKEHOUSE.



OUT IN THE OPEN FESTIVAL



OUTintheOPEN is a festival celebrating LGBTIQA+ pride and community diversity. The festival boasts a two-week program each November including queer films, dinners, drag shows, forums, brunches, art displays, book readings, clothes swaps, carnival day and more.

GV Pride Inc. is Greater Shepparton's peer-led social-support & advocacy organisation for lesbian, gay, bisexual, transgender and gender diverse, queer, intersex and asexual community members and proudly hosts OUTintheOPEN Festival.

Held over 2 weeks in November
Shepparton CBD & Queens Gardens
 0418 511 562
www.outintheopen.org.au
enquiries@outintheopen.org.au



GROUNDED LIVE AT THE DOOKIE QUARRY ON YORTA YORTA COUNTRY



Saturday 2 December 2023
4pm - 11pm

38 Baldock St, Dookie
www.groundedfestival.com.au

There's no place quite like Dookie: only twenty minutes from Shepparton, this precious gem of a village is surrounded by red dirt, golden paddocks and vast skies.

And the jewel in the crown? The Dookie Quarry.

The decommissioned quarry walls whisper messages from basalt and igneous rocks laid down millions of years ago. One special weekend a year, we collaborate with devoted keeper Paul Trickey to curate a live music event as precious and rare as this spectacular place.

The setting is breathtaking, the stars are stunning, the music unbelievable.

Gather your humans, bring your *joie de vivre* and love for all things live and local, and be blown away by the unique experience that is Grounded on Yorta Yorta Country.

Sign up to our mailing list (aka love notes) to be in the know. Artist announcements throughout the year, tickets on sale now.



Tickets on sale now
Scan the QR code





SHEPPARTON ALBANIAN HARVEST FESTIVAL



The Shepparton Albanian Harvest Festival began over 20 years ago as a way for the Albanian community to celebrate its culture and help families in the area keep in touch. Since moving to the central location of the Queens Gardens, the cultural mix of attendees has expanded, making it one of the largest community run events in Greater Shepparton.

Now the festival is held annually in March, celebrating food, family, music and fun, showcasing the Albanian culture unlike any other event in Australia.

A celebration of Albanian culture, welcoming to all.

- Traditional music and dancing
- Family entertainment
- Locally grown fruit and vegetable market, available at wholesale prices
- Take home a taste of traditional Albanian food, supported by the Shepparton Albanian Women's Committee

Held annually in March in the Queens Gardens
Wyndham St, Shepparton
www.sheppartonalbaniansociety.org/harvest-festival



SHEPPARTON FESTIVAL



Shepparton Festival commissions, develops and presents a thrilling 2-week annual program of events encompassing performance, music, literature, visual arts and food. The Festival brings people together from all walks of life to celebrate our vibrant creative community.

For 26 years we've been passionate about giving artists a platform, paving the way for the Festival to be treasured locally and beyond. For two weeks, we will spill into familiar and unfamiliar spaces across the region as we continue our legacy as one of Victoria's longest running arts festivals.

Friday 5 to Sunday 21 April 2024
Right across the Goulburn Valley
www.sheppartonfestival.org.au

Programming

- Comedy
- Culture
- Exhibition
- Experience
- Film
- In Conversation
- Music
- Performance
- Visual Art
- Workshops



FRYERS STREET FOOD FESTIVAL

*Celebrate community, culture
and the joy of food, together!*

**SATURDAY 11
NOV 2023
4PM - 10PM**

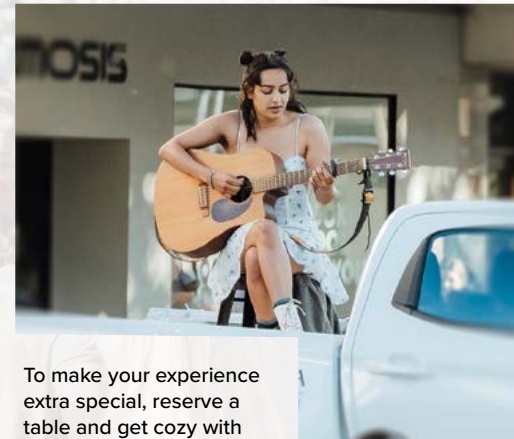
Get ready for a mouthwatering adventure as we take you on a culinary journey through Shepparton's CBD! Mark your calendars, bring your appetite, and join us for a gastronomic extravaganza that's all about food and FUN!

cheers!

Fryers Street and its surroundings will be brimming with delicious options from local traders and visiting food trucks, joining us from across Victoria. Tantalize your taste buds with hero dishes from Shepparton's top restaurants and cafes, and exciting offerings from a curated selection of food trucks.



Don't miss out on this tempting opportunity before the Christmas rush hits! Gather your foodie gang, invite the family from out of town, and share some quality time together. While the little ones have a blast at various activity locations, you can enjoy memorable moments with your loved ones.



To make your experience extra special, reserve a table and get cozy with nine friends or family members, and savour the culinary delights all night. Immerse yourself in a delightful atmosphere filled with live music and roving performers, adding an extra layer of FUN to the festivities. It's not just about the food; it's a sensory wonderland!



Worried about parking? We've got you covered. Head to the nearby Showgrounds and hop on the shuttle bus for a seamless journey to the festival. If you're a local, consider strolling, cycling, or carpooling with fellow food enthusiasts.



JL Productions & Hire

For ALL the extra info head to our website and follow us online

www.fryersstreetfoodfestival.com.au



SIGHTS to SEE



Attractions and entertainment are abundant, with thrills for the whole family.



There's no end to the variety of experiences offered in our premier venues Riverlinks Eastbank and Westside, from piano recitals to comedy, theatre and dance performances. Book ahead and plan your Shepp and GV escape around your chosen event, with comfortable accommodation and local dining venues making your visit the whole package.

Town centres come to life after dark, with live bands found in venues from the Gladstone in Dookie to the Shepparton Brewery, you'll be rocking until the wee hours.

Explore the great outdoors, with shared pathways weaving along the riverbanks connecting Shepparton to Mooroopna and beyond, or rail trails in Murchison and Dookie. Outdoor adventure awaits at Kidstown with plenty for the little explorers, from giant slides to mazes, swings and sandpits.

COME *See* FOR YOURSELF

Top 5 for a fun-time with family



1 KIDSTOWN ADVENTURE PLAYGROUND

This colourful and creative outdoor adventure playground entertains kids of all ages. From the fruit bin maze to giant slides, or disc golf. *See page 32*

3 CHOCOLATE APPLE FACTORY

Freshly sourced apples from the Goulburn Valley, dipped in creamy caramel, coated in chocolate and decorated with all kinds of sweets. Perfect for sharing – but you won't want to! *See page 61*



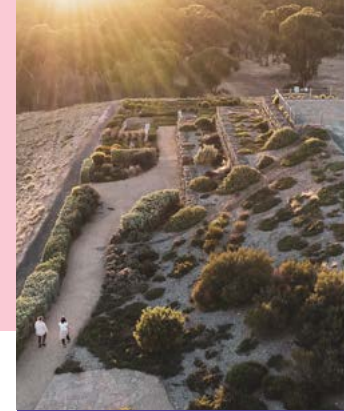
4 MOOOVING ART

The colourful cows are dotted around the region's public spaces. Grab a list of the locations from the Visitor Centre and plan yourself a muster. *See page 39*



5 RAIL TRAILS & SHARED PATHWAYS

Whether you are seeking a leisurely ride for the family or a scenic bush walk, there are trails and pathways that connect the region. *See page 37*



2 AUSTRALIAN BOTANIC GARDENS

Climb to the peak, race down the zig-zag path or weave a path through the refuge garden. Kids will love the colour and texture of the plantings and the creative sculptures. *See page 37*



MUSEUM OF VEHICLE EVOLUTION (MOVE)

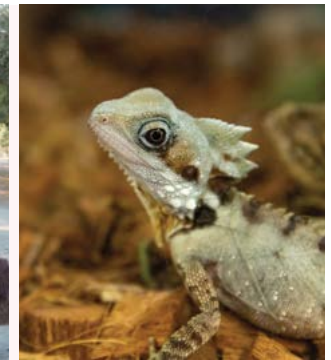


The Museum of Vehicle Evolution is a world-class transport museum. MOVE displays motor cars, motorbikes, trucks, buses, and much more. Learn about the legends of the road transport industry and their machines in the Kenworth Dealer Pavilion's "Avenue of Legends." MOVE also includes; The Furphy Museum, The Farren Vintage Bicycle Collection, The Dick Clayton Collection of gramophones, telephones, and radio, and the extraordinary Loel Thomson Costume Collection.

A must-see destination with something for everyone

- 150+ Vehicles on display
- Interactive kids activities
- All collections displayed in a contemporary and interactive exhibition space
- Merchandise and gift shop
- Free parking and EV charging
- Café and other stores within the Emerald Bank precinct to enjoy

Open 7 days 10am - 4pm
 (03) 5823 5833
 7723 Goulburn Valley Hwy, Kialla
www.moveshepparton.com.au



KYABRAM FAUNA PARK



Adventure through Kyabram Fauna Park's expansive wetlands and bushlands, and explore a stunning array of birdlife and unique native animals. Relax at the Fauna Park Café with our playful meerkats, or enjoy a BYO BBQ while the kids are entertained at the playground. Kids visit free on weekends, public holidays and Victorian school holidays.*

1300 966 784
 75 Lake Rd, Kyabram
zoo.org.au/kyabram

KYABRAM FAUNA PARK

* zoo.org.au/kids-visit-free



RIVERSIDE GARDENS MINI GOLF



Laugh-a-Lot Links is an 18 hole mini golf course, designed for everyone to enjoy.

Set in 2 hectares of landscaped gardens, the course features 2 large lakes, rivers and creeks, large open lawn areas and rustic pavilion with picnic tables. Café on site at Emerald Bank for coffee, breakfast and lunch.

Challenge your friends and family while you enjoy the beautiful surroundings.

Open 9am - 5pm everyday
 (03) 5823 1515

7715 Goulburn Valley Hwy, Kialla
 Take a 360° virtual tour at
www.riversidegardens.com.au





KIDSTOWN ADVENTURE PLAYGROUND



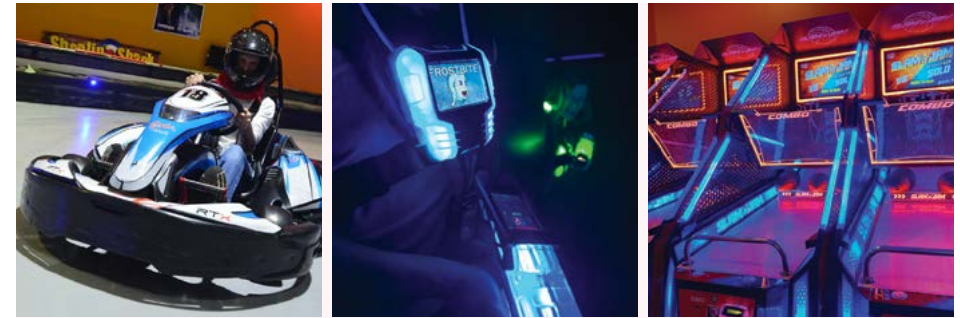
KidsTown is one of the largest outdoor adventure playgrounds in Victoria. Spread over five acres, KidsTown features giant slides, mazes, swings, a field of monkey bars and a huge range of playground equipment plus toddlers' area, teen playground, disc golf course, Sprout Edible Garden and more! Surrounded by picturesque natural bush land, KidsTown enjoys plenty of shaded and undercover areas for play, picnics, parties and barbecues.

KidsTown is home to the Dig In Café, with a menu designed with little people in mind. There is a selection of fresh salad bar options, hot food, lunch meals including kids menu that not only look and taste great, but are good for you (with a few treats too).

Dig In Café, Sprout Edible Garden and the Disc Golf Course open 10am – 3pm weekends and Victorian School Holidays.

KidsTown is proudly provided by Greater Shepparton City Council.

Playground open dawn till dusk every day
 (03) 5831 4213
 7287 Midland Hwy, Mooroopna,
 on the Causeway, Yorta Yorta Country
www.kidstown.org.au



FUN PLANET



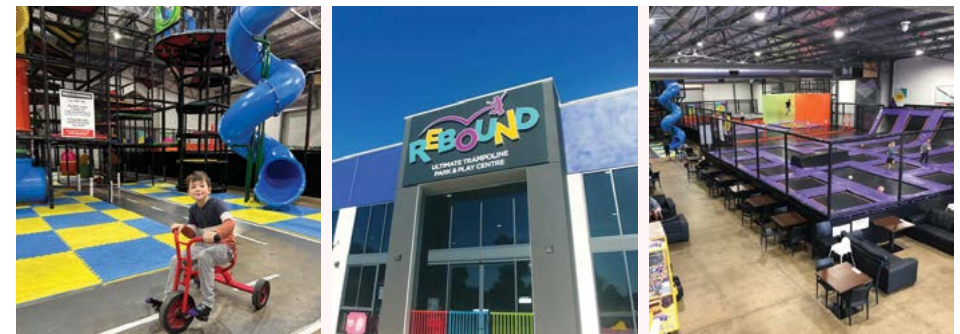
Grab the kids and escape to Fun Planet for out of this world indoor entertainment! Walk into a world of 130+ arcade games. Target your friends and protect your base across 3 levels of laser tag. Race around the indoor go-kart track or climb your way up the rock wall. Zip around in a dodgem car or explore glow-in-the-dark mini golf!

Scan the QR code to check out the Planet Pass or go online to book.

Opening hours: Wed - Fri 1pm - 9pm,
 Sat 10am - 9pm and Sun 10pm - 6pm



Riverside Plaza
 (near Harvey Norman)
 8025 Goulburn Valley Hwy, Kialla
www.funplanet.com.au



REBOUND TRAMPOLINE PARK & PLAY CENTRE



Rebound is the ultimate indoor family-friendly trampoline park and play centre. Featuring a dedicated toddlers play area, large multi-level playground, tricycle track and indoor trampoline park to entertain the kids.

Food and coffee is available with our onsite café allowing parents to sit and relax, chat, read or watch on while their children play. We also cater for birthday parties. Private party rooms available.

Open 9am - 5pm everyday
 (03) 4800 5656
 7959 Goulburn Valley Hwy, Kialla
www.reboundsshepparton.com.au





AQUAMOVES

Aquamoves is Greater Shepparton's premier recreational centre, located behind the picturesque Victoria Park Lake. Perfect for families, people who are serious about their fitness, or for those who just want to relax.

The indoor facilities include a leisure pool with rapid river and water slide, a 25m pool with Tarzan swing, hydrotherapy pool, spas and sauna.

The outdoor facilities include a 50m pool, splash park and outdoor leisure pool with toddler area.

A spacious gym with over 55's group fitness classes each week offering a great exercise experience.

Trading hours are also extended during summer to make the most of the season. Check the website for updates.

Mon to Fri 6am - 8pm
Sat 7am - 5pm
Sun 8.30am - 5pm

(03) 5832 9400
25 Tom Collins Dr, Shepparton
www.aquamoves.com.au



The ultimate in fun and fitness

- Indoor and outdoor aquatic facilities
- On site cafe
- Spa and sauna
- Hydrotherapy pool
- Spacious gymnasium
- Group fitness classes
- Free BBQ facilities



RIVERLINKS VENUES

Don't miss out on your chance to be one of the 50,000 people to laugh, cheer, cry or be in awe at Riverlinks this year. Linking community and visitors to performing arts and live entertainment with different live shows every week, ensuring a great night out!

For information about upcoming events and ticket purchases visit the website.

You can celebrate at our venues, Riverlinks Eastbank and Riverlinks Westside, who can cater for full or half day meetings, seminars, lunch and dinner presentations, weddings and private functions.

Expert staff can plan, create, set up and operate all requirements to make your event stand out.



(03) 5832 9511 - Box Office
(03) 5832 9865 - Admin
70 Welsford St, Shepparton
www.riverlinksvenues.com.au





ACTIVITIES IN THE PARK

Encouraging everyone to get outdoors and be physically active, Activities in the Park provides residents and visitors the opportunity to explore our parks, playgrounds, facilities and pools by participating in a number of free and low cost activities.

At the start of spring there will be activities for all abilities and ages from babies to elderly, with inclusive and multicultural activities on the program. Find out what's on via the QR code, website and Facebook.



activities
in the park



(03) 5832 9431

Various locations around
the region all year round
getmoovingshepparton.com.au



RIVER COUNTRY ADVENTOURS



0428 585 227
13 Mackie St, Kyabram
www.adventours.com.au

Canoeing and kayaking on the nearby Goulburn and Murray Rivers available for everyone. Self-guided safaris from 2-6 days as well as camping, day and half day safaris. River country Adventours have been running since 1993.



AUSTRALIAN BOTANIC GARDENS SHEPPARTON

Botanic Gardens Ave, Kialla (formerly Kialla Tip Rd)
www.greatershepparton.com.au

Explore and enjoy the beauty of Australian native plants in themed gardens designed to represent the cultural, environmental, historical and agricultural characteristics of Greater Shepparton and the Goulburn Valley.



DOOKIE RAIL TRAIL

67-71 Mary St, Dookie
sheppandgv.com.au

The Dookie Rail Trail offers scenic views of rolling hills, seasonal crops, wildlife and a town with spirit. This trail is suitable for all ages, perfect for cyclists and walkers, with gentle hill climbs and great views of the Dookie and Yabba Districts. If you're lucky you might spot wildlife and happen upon 'Willy the Wombat'.



MURCHISON RAIL TRAIL

Gregory Rd, Murchison
sheppandgv.com.au

An 8km trail from the Murchison Township to the rail bridge at Channel Inlet Road, which includes the recently refurbished historically significant bridge over the Stuart Murray Canal and borders the unique ecosystem of Doctor's Swamp wetlands. The trail offers easy access to the Parks Victoria picnic area on the western boundary of the swamp.



BILLABONG RANCH ADVENTURE PARK

Billabong Ranch offers a number of entertaining activities providing the opportunity for visitors to try something new or test their skills, with fully licenced café open all day.

Indoor Activities

- 18 hole Mini Golf Course
- 30m Rock Climbing Wall
- Archery Range with 6 shooting targets

Outdoor Activities

- Bungee Trampolines
- Frisbee Golf Course
- Merry-Go-Round
- Animal Walk with feed bag
- 1 & 2 hour Horse Trail Rides
- Pedal Boats
- Camel Rides
- Pony Rides

Mon to Sat 9am - 5pm
Everyday over the
Victorian School Holidays
(03) 5483 5122
Cnr Glanville & Tehan Rd, Echuca
www.billabongranch.com.au





SHEPPARTON GOLF CLUB



Established in 1922 the Shepparton Golf Club is built on the natural sandhills on the banks of the Goulburn River, giving the course great playing conditions all year round, even in the wettest of winters. This top 100 nationally ranked course is a must play for golfers of all levels. The course is open to social play most days of the week and is available to play on all year round.

The club boasts 12 on-course motel rooms, all with panoramic views. The bistro is available for refreshments after a round, and even dinner on Friday evenings.

Pro Shop (03) 5821 2531
 Golf Drive, Shepparton
www.sheppartongolf.net.au
info@sheppartongolf.net.au



ABORIGINAL STREET ART PROJECT

The Aboriginal Street Art Project has been named by locals as 'Dana Djirungana Dunguludja Yenbena-l' which means 'Proud, Strong, Aboriginal People' in Yorta Yorta language. This project is aimed at celebrating and recognising the local Aboriginal history. Various murals painted by well known artist Matt Adnate, with the mural of Private Daniel Cooper painted by artist Cam Scale.

Found along Fryers and Welsford Streets, Shepparton
www.sheppandgv.com.au



INTERACTIVE MAPS

Discover the region's incredible destinations, unique attractions and top cultural spots with our collection of curated maps, guides and itineraries.

Scan the QR code to view online.



MOOVING ART

Mooving Art Cows are an iconic part of the Shepparton and Goulburn Valley landscape. Scattered throughout our unique, connected towns, Mooving Art is an ever-changing public art exhibition using a unique canvas – 3D life sized cows! There are over 90 in the herd, including 3 calves. Created by local artists to celebrate our culturally diverse and inspiring region, they can be discovered throughout our unique, connected small towns.

Various locations around the Goulburn Valley
www.sheppandgv.com.au



ROCK YOUR SENSES IN STRATHBOGIE SHIRE



Home to the magnificent Strathbogies Ranges and majestic Goulburn River around a 90-minute drive from Melbourne, Strathbogies Shire is bursting with natural beauty, fantastic food and wine, awesome events and a community full of welcoming people.

Each of the Shire's townships has something to offer – Avenel rocks foodie haven, Euroa rocks pubs and picnics, Longwood rocks gigs and gems, Nagambie rocks food and wine, Ruffy rocks granite hills, Strathbogies rocks farms

and forests and Violet Town rocks arts and markets.

Explore the native fauna and flora at the Euroa Arboretum or on one of the many tracks and trails, take a sunrise hike to the lookout at Mount Wombat, a family day of water sports on Lake Nagambie or exploring the Gooram Falls trail.

Experience some of our local legends. You might just come across the infamous black Bogie panther. Take a dip at the gorgeous Polly McQuinn's – don't be disconcerted with the thought of Polly and his horse and dray lying somewhere

in the watering hole's infinite floor, never to be found.

After a day of exploring the outdoors, enjoy the region's great wine and gourmet produce with award-winning wineries, eclectic high-quality eateries and magnificent markets to wander.

Every town has a local story to be told with proud heritage and history in the region. From over 40,000 years of history with the Traditional Owners of the Taungurung and Yorta Yorta, to the explorers Hume and Hovell, infamous Ned Kelly and proud military history.



Explore Strathbogies Shire with a guided podcast tour, read stories from our amazing locals, explore the many amazing attractions and more at www.strathbogiestory.com

Strathbogies
SHIRE COUNCIL



TAHBILK WINES



Established in 1860, Tahbilk is the oldest family-owned winery in Victoria. Visiting the winery is like stepping into an oasis, where the natural landscape complements the winemaking legacy. Tahbilk has a rich source of old and iconic single vineyard wines, including Victoria's oldest shiraz, planted in 1860, and Australia's oldest marsanne, planted in 1927.

- Free cellar door wine tasting
- The Secret Art of Winemaking - Wine Blending Experience
- Private Tastings in the Len Evans Museum
- Private Tour of the Tahbilk Estate
- Tahbilk Wetlands Restaurant
- Eco Cruise
- Wetlands Walk
- Wine Club, includes exclusive events, promotions & first access to new releases

Mon to Fri 9am - 5pm
Sat & Sun 10am - 5pm

(03) 5794 2555
254 O'Neils Rd, Tahbilk

www.tahbilk.com.au
admin@tahbilk.com.au

TAHBILK
EST. 1860

TASTE and sip for YOURSELF



The diversity of the region is reflected in the evolving multicultural food offerings, from Turkish, Albanian, Syrian, Vietnamese, Japanese and Italian.



Mouth-watering flavours are found in the main streets of our townships and whole festivals are dedicated to celebrating the flavours of diversity.

A thriving café culture kicks off the day, with the scent of locally roasted coffee.

An evolving farm-gate offering provides opportunities for visitors to indulge in the seasonal delights of the region, from the first cherries of early spring, to olive oil and pasture raised beef, you can gather your own ingredients as you tour the region or enjoy a paddock to plate experience at one of our venues.

Wine, beer, cider and gin, are all crafted expertly in the region, with makers offering tastings and sales from cellar door style venues across the region. Alternately, discover these local drops at quality bottle shops and on drinks lists of many venues. It is worth the drive to savour a crisp Longleaf sparkling among the vines, a Dookie Shiraz fireside at Rye at Tallis, or a Cheeky cider in the shade of the old fig tree.

COME Feast FOR YOURSELF



STELLAR COFFEE



Stellar is an award winning artisan coffee shop in the heart of Shepparton. Sourcing quality locally roasted coffee, handmade local boutique sweet treats and only the highest quality products.

Enjoy a drink paired with freshly prepared focaccias, wraps and paninis in our accessible-friendly rustic venue.

Sit. Sip. Stay.

STELLAR (Adjective)

1. Featuring or having the quality of a star performer or performers. "A Stellar cast had been assembled"

1.1 Exceptionally good; Outstanding

Stellar is exactly that! Come and try for yourself.

Trading Hours:
Mon to Fri 6am - 3pm | Sat 7am - 2pm
 (03) 5821 4200
 278a Wyndham St, Shepparton
www.stellarcoffee.com.au

STELLAR
 COFFEE



BILL + BEATS

Situated within the country charm of Mooroopna, Bill + Beat's is a split-level venue, consisting of a cafe setting at the front, a large urban eclectic restaurant space towards the back, an intimate beer garden under the leafy vines and even an upstairs private space with warm old world charm. Available as a function space, dine in or takeaway.

Whether you just want to enjoy a coffee or go on a culinary journey, the extensive food, dessert and drink menus will deliver mouthwatering, refined and rustic dishes to cure your cravings.



Mon to Fri 7am - 3pm
Sat & Sun 8.30am - 3pm

(03) 5825 3695
info@billandbeats.com.au
106a McLennan St, Mooroopna
www.billandbeats.com.au



OKAMI JAPANESE RESTAURANT

Okami offers an authentic Japanese dining experience with the highest quality ingredients sourced locally and the finest services, plating up 30+ options on the menu - all made fresh with every order.

The ALL-YOU-CAN-EAT menu means everyone in your group can try anything or everything and leave feeling full and happy, so come and join us for the bottomless feast you won't forget.



(03) 9034 3996
111 Fryers St, Shepparton
www.okamirestaurant.com.au



SHEPPARTON RSL CLUB



A very popular venue in the heart of town with plenty of free parking at the rear.

Enjoy a coffee or drink in the lounge area, watch all the sporting action on the big screen or feast on what Digger's Bistro has to offer. The extensive menu features old time favourites plus traditional Asian cuisine that's sure to please. A special lunch menu and Senior's dinner menu is also available.

- Lunch: Noon to 2pm daily
- Dinner: Sun to Thu 6pm - 8pm and Fri and Sat 6pm - 9pm
- Bar menu available when bistro is open
- Bus groups welcome - bookings essential
- Full TAB facilities and Fox Sports
- Award winning memorabilia display
- Bingo sessions Wed to Sat

Open Mon to Sat from 9am
and Sun from 10am
(03) 5820 4100
88 Wyndham St, Shepparton
www.sheppartonrsl.com





ELSEWHERE AT SAM

Elsewhere at SAM provides a truly unique dining experience, taking visitors elsewhere with a menu featuring dishes of different cultures and palates that are as diverse as they are delicious.

With a commitment to using locally sourced ingredients, where possible, to minimise carbon footprint and support local farmers.

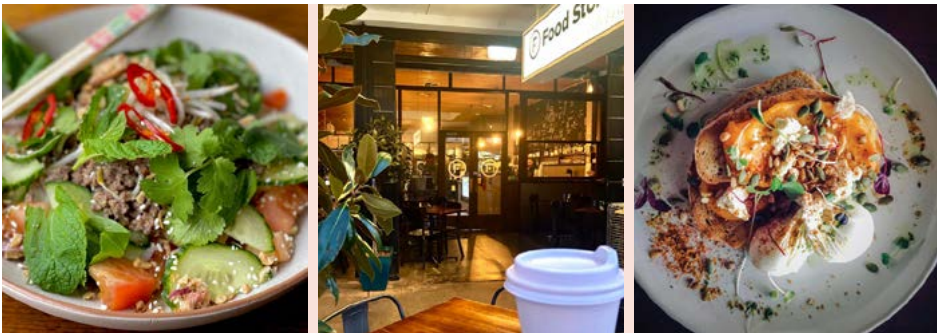
Your furry friends are also catered for with a special dog treat menu.

Open Wed to Mon 8am - 4pm.



(03) 4804 5023

**Inside Shepparton Art Museum
Level 1, 530 Wyndham St, Shepparton
www.elsewhereatsam.com.au**



FRYERS STREET FOOD STORE

The Food Store celebrates everything that is great about living in the Goulburn Valley - the 'Food Bowl' of Australia.

The casual and relaxed atmosphere combined with a menu based on the regions best seasonal produce, the Food Store is a welcome haven for locals and visitors alike.

Take-away coffee, dine in and take-away breakfast and lunch items plus heat and heat and take home meals.

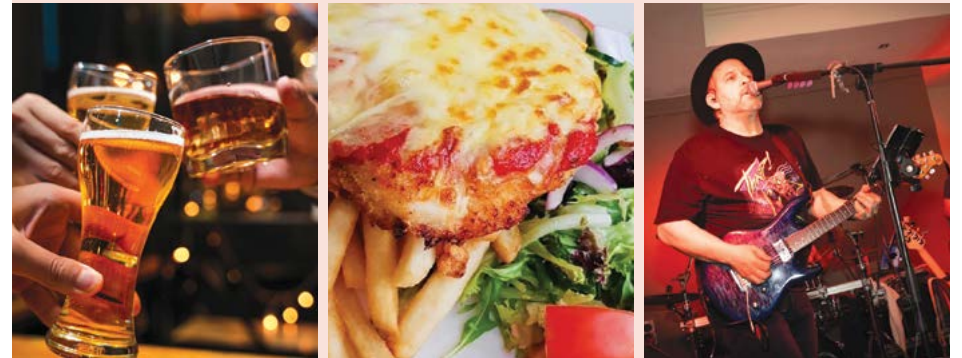
Purchase gourmet local produce, boutique beers, wines and ciders.

Open 7 days for breakfast and lunch.



(03) 5822 4660

**53 Fryers St, Shepparton
www.thetellercollective.com**



AUSSIE HOTEL



Located right in the Shepparton CBD, the iconic Aussie Hotel is open for lunch and dinner with fantastic food and entertainment on offer. The menu has the Goulburn Valley's largest Gluten Free options with seasonal dishes, pub favourites and weekly specials.

There are a number of unique spaces available for events, functions or corporate needs.

To avoid disappointment and ensure you have the best dining experience, it's recommended to book a table.

Something for everyone

- Open 7 days for lunch and dinner
- Free live music every Saturday night
- Shepparton's biggest CBD beer garden
- Live DJs every Friday and Saturday night in the Outback Bar
- Best karaoke in town every Friday night in Jack's Bar from 9pm

**Open 7 days
Mon to Thu 11am - 10pm
Fri & Sat 11am - 1am
Sun 11am - 11pm**

**(03) 5821 4011
info@aussiehotel.net.au
73 Fryers St, Shepparton
www.aussiehotel.net.au**





NOBLE MONKS

Located in picturesque Maude St, is the perfect space to enjoy a coffee, all day breakfast, lunch or, on Friday and Saturday, dinner and even a cheeky cocktail or two.

The menu includes weekly specials, burgers, pastas, salads, grazing and shared plates, and for something sweet, try our signature freakshakes. Takeaway is also available.

There are spaces for private functions to suit large and smaller intimate gatherings, catering for up to 300 people.



**Tue to Sun 8am - 3pm
Fri & Sat 5pm - 1am**

(03) 5831 1607

**120-126 Maude St, Shepparton
www.noblemonks.com.au**



CELLAR 47



**(03) 5831 1882
170 High St, Shepparton
www.cellar47.com.au**

Modern Italian restaurant with a twist of flavours from around the world, specialising in a range of options - steak, pizza, veal, pasta and much more!

Dinner: Tue to Sat 5.30pm - 8.30pm
Lunch: Wed to Fri 12pm - 1.45pm
Closed: Sun and Mon



LONGLEAT WINES



**0421 602 520
105 Old Weir Rd, Murchison
www.murchisonwines.com.au**

Located in the picturesque riverbank town of Murchison, Longleat Wines cellar door is open every weekend from 10am to 5pm. Lunch is also available with an Italian inspired menu that has a focus on local seasonal produce. Bookings are essential.



SHEPPARTON BREWERY

Shepparton Brewery and Side Hustle Distillery is a micro brewery located in the heart of Shepparton CBD. The brewery offers a great range of small plates, burgers, tacos and woodfired pizzas along with the range of beer available on tap. The kids are not forgotten with a kids menu and play area.

Opening Hours:

Tue to Thu 5pm - 10pm for dinner
Fri and Sat 11.30am - 11pm for lunch and dinner



(03) 5821 9776

**15 Edward St, Shepparton
www.sheppartonbrewery.com.au**



THE TELLER COLLECTIVE



Welcoming locals and visitors to enjoy menus based on the best local and seasonal produce found in the Goulburn Valley. We specialise in quality cuts of steak chargrilled to your liking, with a menu that is sure to impress the taste buds offering the option of a set menu for small groups.

Whether enjoying a date night or a major celebration, our centrally located venue has menus to cater for all tastes. Dietary requirements are easily catered for and our venue is accessible and inclusive.

Dine in or take-away. Private dining and event spaces available.

**Tue to Sat from 5.30pm
Fri lunch only from 12pm
(03) 5822 4660**

**55 Fryers St, Shepparton
www.thetellercollective.com**



A taste of the Goulburn Valley

Whatever the weather, our tasting trail offers the perfect Goulburn Valley getaway. Seasoned will lead you to an open door, a seat at the table and a place where local goodness is on the menu.



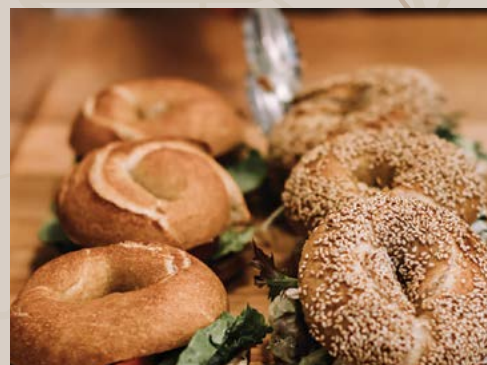
Brewers, distillers, roasters and winemakers

Whether you're in the mood for sipping something local in the evening (beer, wine, gin, cider) or you're in need of a well-made coffee to kick-start your morning, you'll find a world of well-made beverages to discover.



Founded at the farmgate

Some of our best-loved local producers started life as farmgate businesses, selling their wares only moments from where they were picked, reared or made. These days you'll find Goulburn Valley produce in stores across our region as well as further afield on the shelves of select metropolitan stores.



Butchers, bakers and makers

Whether you're packing for a picnic or want to stock up the pantry at home, you're in the right place for delectable goodies to go. Our region offers fine meats, sweet, savoury and baked treats made to traditional recipes by families and people dedicated to their craft.



Restaurants and cafes

Explore the region's flavours, from quick cafe bites to long lunches and dinners, and you'll discover dishes made with local produce and served with local pride.



Visit destinationgoulburnvalley.com.au or scan the QR code before you hit the road.

Destination
Goulburn Valley





THE CHEEKY GROG CO   

1300 243 359
5160 Shepparton-Barmah Rd, Bunbartha
www.cheekygrogco.com.au

As third generation fruit growers, Mark and Jenny's ciders are brewed exclusively with locally sourced fruit, containing no added sugars. Lunch and dinner are available Friday and Saturday with lunch only on Sunday. Opening hours may vary, please check online or call. Cellar door and tastings by appointment only.



WILD LIFE BREWING CO   

info@wildlifebrewing.co
4-6 Williams Rd, Shepparton
www.wildlifebrewing.co

Wild Life Brewing Co is a small team of mates who grew up in country Victoria, who started brewing knowing they had to make something simply delicious for the way people drink in the country. Come grab yourself a frosty six-pack!

Open Thu 3pm - 8pm, Fri 3pm - 10pm
and Sat 2pm - 10pm



PHILLIPS CELLARS



After 45 years in the industry, the Phillips family knows their wine and firmly believes that small wineries produce the most interesting and unique wines.




The in-store Regional Wine Centre represents more than 50 local wines from the Goulburn Valley, Heathcote, Strathbogie Ranges, King Valley & Rutherglen regions, the flagship varietal is Shiraz. The regions also offer other fantastic varietals such as Durif, Sangiovese, Tempranillo, Pinot Crigio, Riesling, Chardonnay, Vermentino, Grüner Veltliner, Rosé & Prosecco.

Prefer a brew instead? The range includes craft beer and cider.

Mon to Fri 9am - 6pm
Sat 9am - 3pm
(03) 5821 2051

119 Corio St, Shepparton
www.phillipscellars.com.au




COLD ROCK    

(03) 5821 5444
Shop 3/465 Wyndham St, Shepparton
www.coldrock.com.au

Mix it your way, choose from 30 great ice cream flavours and watch as staff use the cold rock to mix in your favourite chocolates, lollies, fruits, nuts and hot fudge sauces. Try the loaded shakes, smoothies, banana splits and hot waffles plus ice cream cakes and take home packs. Delivery available.



SCHNITZ   

(03) 5831 8098
124 Fryers St, Shepparton
www.schnitz.com.au

Enjoy our range of tasty wraps, burgers or plated meals. Schnitz it your way, choose your protein and crumb. Your schnitzel is then freshly hand crumbed and pan cooked to a delicious, crispy golden brown.



PIZZA PLUS SHEPPARTON



Pizza plus is an all-you-can-eat restaurant serving delicious pizzas, pasta, salads, sides and desserts. Purchase a soft drink and receive free refills to wash it all down. The venue is also licensed so you can compliment your pizza of choice with an alcoholic beverage - sorry no free refills on those!

Takeaway menu and meal deals are available for pickup or can be delivered to Kialla, Mooroopna, Shepparton and Shepparton East.

Open everyday for lunch from 11.30am to 2pm
and dinner from 5pm to 8.30pm.

(03) 5812 9060
204 Corio St, Shepparton
www.pizzaplusshp.com.au





ZAIKA INDIAN RESTAURANT

Serving the flavours of India featuring a variety of delicious dishes, from traditional curries such as butter chicken and rogan josh to tandoori chicken and garlic naan.

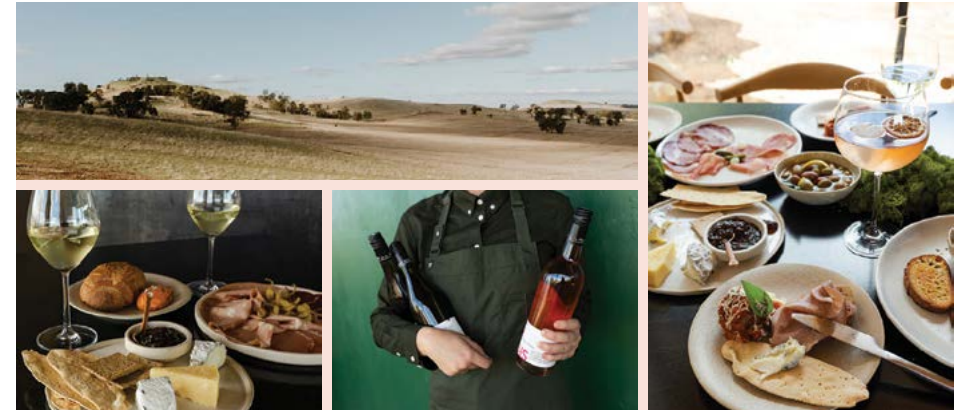
The talented chefs use fresh ingredients and traditional spices to create bold and flavourful dishes that transport you straight to India.

Vegetarian options are also available along with a variety of sides, desserts and beverages to complete your meal.

Dine in for dinner or takeaway Mon to Sat from 5pm to 9.30pm.



(03) 5858 5660
67 Fryers St, Shepparton
www.sheppartonzaika.com.au



RYE AT TALLIS

Meet you on the hill.

Rye at Tallis is a reimagined wine bar and event space in the Dookie Hills serving Tallis Wines alongside top-shelf drinks and dishes from across the valley.

Taste the region. Toast your mates.



Thu to Sun 11am - 5pm
0437 825 547
5 Major Plains Rd, Dookie
www.ryeattallis.com.au

RYE AT TALLIS



SHEPPARTON GOLF CLUB

The Shepparton Golf Club boasts a welcoming, fully licensed clubhouse, bar, bbq facilities and an expansive entertainment balcony, making it the perfect spot to unwind after a round of golf.

Enjoy a meal with friends at Shepparton Golf Club clubhouse with a magnificent view overlooking the golf course. Happy hour is on every Friday between 5pm and 6pm with a variety of meals and snacks also available from the bar.



Pro Shop (03) 5821 2531
Golf Drive, Shepparton
www.sheppartongolf.net.au



AUGUSTUS GELATERY

Created with time-honoured artisan Italian techniques, the range of famous flavours is made fresh everyday. The natural ingredients and traditional aeration creates the creamy, lavish signature wave, a taste sensation that's a mouthful of fun! The menu also includes sorbet, plant-based gelato, cakes and shakes. Dine in the architecturally designed boutique or grab a tub to go. If you're seeking a mouthwatering sweet treat, Augustus Gelatery is a must visit.



Open 7 days 12pm - 10pm
Hours may vary
(03) 5800 2664
230-232 Maude St, Shepparton
www.augustusgelatery.com.au



SHOPPING to EXPERIENCE



Experience the vibrant retail scene in Shepparton and Goulburn Valley, perfect for your next shopping adventure.

Gather a group and embark on a memorable trip, immersing yourselves in the revamped Maude Street precinct, home to many familiar brand names. Delicious dining options are scattered throughout the CBD and beyond, ensuring your day is filled with exploration and delightful surprises. You will uncover a world of culinary wonders, from exotic spice markets to an array of cooking utensils. Delight in the abundance of unusual ingredients and local produce; you will find opportunity to savour flavours from surrounding farmland and across the globe.



Discover small town charm in Dookie, Mooroopna, Kialla, Murchison and Tatura.

Venture beyond the city limits to discover the charm of the region's smaller towns, including Mooroopna, Murchison and Tatura, which offer boutique shopping experiences. Take your time as you search for one-of-a-kind gifts for your loved ones, appreciating the uniqueness each town has to offer. Step into a bygone era and unearth vintage treasures in Dookie, Tatura and Kialla by exploring



establishments that have masterfully crafted their stores around the allure of the peculiar and the extraordinary, presenting you with an array of hidden gems waiting to be discovered.



DOTZ FOR KIDZ

Dotz for Kidz stock an extensive range of educational and sensory toys and resources catering to all ages and abilities. The range provides children with fun and engaging activities that focus on their different stages of development. Call in and speak with mother-daughter team Judy and Katrina about handy portable travel toys, sensory toys and tools, plus the unique range of wooden toys.

- Puzzles
- Sensory toys & tools
- Educational toys
- Infant & toddler toys
- Aromatherapy & Diffusers
- Lunch boxes
- Mealtime utensils
- Ride-on toys
- Play sets



**Mon to Fri 10am - 5pm
Sat 10am - 1pm**
0488 011 801
60 Fryers St, Shepparton
www.dotz.com.au





NIXON + MAUDE



Welcome to NIXON + MAUDE, a store dedicated to customer service with a love for fashion, home and lifestyle.

Shop the curated range of fashion, footwear, jewellery, bath, body, baby & kidswear, kitchen, dining, bedding, books, stationery, pet accessories and games in-store or online.

Fashion by

- Status Anxiety
- Once Was
- Jac+Jack
- Cable Melbourne
- ENA PELLY
- Country Road
- AG Jeans
- Love Fairley Jewellery
- Papinelle

Homewares by

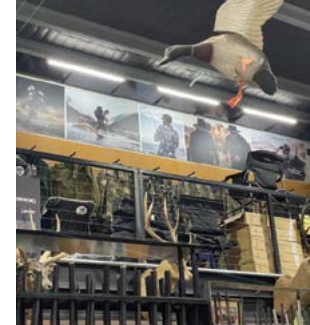
- MUD australia
- Sage & Clare
- Kip&Co
- Eadie Lifestyle
- Pola & Joy
- Marmoset found
- Menu
- Kollab
- Kimmy Hogan

Lifestyle by

- SOH Melbourne
- Addition Studio
- Salus Hand & Body
- Leif hand & body
- Salt by Henrick
- Peggy Sue
- BOPO women
- Just Smitten
- Me & Amber

Mon to Fri 9.30am - 4.30pm
Sat 9.30am - 1.30pm
Opening hours may vary

(03) 5821 5188
114 Maude St, Shepparton
www.nixonandmaude.com.au



TRELLY'S OUTDOOR



Whether it's duck season or cod season, Trellly's Outdoor have a large range of all the gear for fishing and hunting, plus outdoor adventures including apparel and canoe hire.

With over 30 years in operation they offer the biggest brands including Yeti, Shimano, Daiwa, Winchester and Browning.

Located in Shepparton, they are close to a number of great fishing spots brimming with Snapper, Bream, Murray Cod, Golden Perch, Redfin, Squid, Trout and heaps of other species.

Stocking all the gear for your next outdoor adventure, including:

- Firearm accessories, storage, cleaning and maintenance
- Adults and kids apparel
- Fishing reels, lures, rods and accessories
- Outdoor accessories including Yeti products, lighting, knives and lighting
- Tents and swags
- Satellite communication

Mon to Thu 9am - 5.30pm
Fri 8am - 7pm
Sat 8am - 1pm

(03) 5821 6572
209 Corio St, Shepparton
www.trellys.com.au





BE MELLOW



Browse till your heart's content, with so much to take in, Be Mellow is more of an experience than a place to shop. Offering you a wonderland of ideas from fashion and accessories to home decor and beautiful gifts.

Our super friendly team of lovely ladies offer a genuinely warm welcome, give you the space to browse without any fuss..... and are always at hand when you need assistance!

It is our pleasure to offer complimentary gift wrapping 'with love' service to save you the worry.

Be Mellow - fashion, heart and home!

What's in store

- Italian silks, linens & knits by Elizabeth Scott, Imagine and Chuckles & Boo
- Casual, evening and office wear
- Nancy Joanna Jewellery
- Accessories
- Soft furnishings
- Gold & silverware
- Aromeca Candles
- Country inspired signs
- Photo frames
- Fusion paints
- Floral arrangements

Mon to Fri 10am - 5pm
Sat 10am - 2pm
Opening hours may vary

0419 135 506
21 Fraser St, Shepparton
bebellowshepp@gmail.com



CHOCOLATE APPLE FACTORY



A magical chocolate wonderland awaits within one of the Goulburn Valley's most iconic buildings, the Emerald Bank windmill. Indulge in locally grown Pink Lady Apples, dipped in creamy caramel, smothered in chocolate and topped with tasty treats, plus chocolate coated nuts, fruit, jellies and liquorice. Retail therapy has never tasted so good!

(03) 5823 2416

7717 Goulburn Valley Hwy, Kialla
www.chocolateapplefactory.com.au

Mon 10am - 3pm (Closed Tues)
Thu to Sun 10am - 3pm School holiday hours may vary.



LINDSAY'S JEWELS & GIFTS



Family-owned and run gift shop located in Murchison. Stocking a huge range of gifts including gemstones, jewellery, candles and soaps, garden art, wind spinners and windchimes, incense, wall art, clocks and so much more. You can also find hand made baby bibs, toys, burp cloths, quilts and bath bombs crafted by the daughter of the family, Lynzie.

0498 537 621

15 Stevenson St, Murchison
www.lindsaysjewelsandgifts.com

Open 7 days 9am - 5pm





BOUTIQUE ON BINNEY

Feel fab with looks to love. From fashion staples and comfortable casual wear to special occasions Boutique on Binney is home to a collection where practical daywear meets statement styles. Shop new season styles, accessories, jewellery and footwear in-store or online.

Stocking all your favourite brands

- Elk
- Elm Lifestyle
- Foxwood
- Hammill & Co
- Sass
- Betty Basics
- All About Eve



Mon to Fri 10am - 5pm
Sat 10am - 2pm

(03) 5821 5827

221 Maude St, Shepparton
www.boutiqueonbinney.com.au

BOUTIQUE
— on —
b i n n e y



FLOURISH ON MCLENNAN

McLennan Street Mooroopna is home to Flourish, where you will find a beautiful array of plants, pots and accessories. The indoor and outdoor spaces provide a variety of nature's finest, including native plants and succulents. You can also warm up in winter in front of the woodfire. With so many beautiful plants and great gift ideas, Flourish on McLennan is a natural choice for a visit.



Wed to Sat 10am - 5pm
Sun & Mon 11am - 3pm

(03) 5825 2694

120 McLennan St, Mooroopna

 **Flourish**
ON MCLENNAN



STEPHENS JEWELLERS

Stephens Jewellers is your family owned, personal jewellery store and diamond destination with two locations in Shepparton. Providing a comprehensive array of custom jewellery design, repair and restoration services, we also stock a diverse range of trusted brands including Pandora, SEIKO, Swarovski, Tommy Hilfiger and Von Treskow. **Shepparton Marketplace, Benalla Rd, Shepparton**
Mon to Thu 9am - 5.30pm | Fri 9am - 6.30pm
Sat 9am - 5pm | Sun 10am - 4pm
52 Fryers St, Shepparton
Mon to Fri 9am - 5.30pm | Sat 9am - 1pm



Marketplace
(03) 5821 1059

Fryers St
(03) 5821 3361

sales@stephensjewellers.com.au
www.stephensjewellers.com.au

Stephens
JEWELLERS



EMPORIUM 3630

The Goulburn Valley is home to many talented small businesses who choose Emporium 3630 to showcase their creations for sale.

With such a wide variety of beautifully homemade products at reasonable prices, Emporium 3630 is the perfect place to go for a souvenir, gift or something unique for yourself.

Spend time browsing the shelves and find something different each visit, or the helpful owners can happily point you in the right direction for ideas or for something more specific.



Tue to Fri 9am - 5pm
Sat 10am - 4pm
Sun 10am - 3pm

0431 333 649

147-149 High St, Shepparton
emporium3630@gmail.com

Emporium 3630



SHEPPARTON MARKETPLACE



Home to Woolworths, Big W and 45 unique stores. With over 1,000 free untimed parking spaces available, including disabled and parent parking close to all entrances.

The centre features a food court, baby change rooms and school holiday activities throughout the year. Stay up-to-date with current events through our website, Facebook and Instagram.

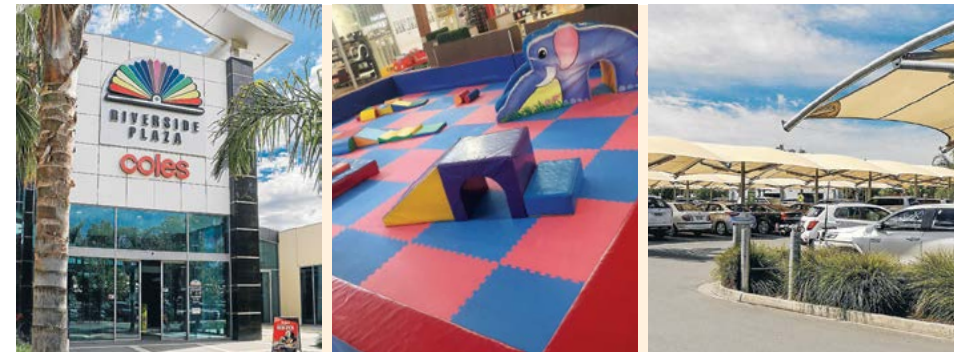
A great place for creating an enjoyable shopping experience for you and your family. Located in the heart of the Goulburn Valley. Find all your essential needs in one convenient location.

Open 7 days
(03) 5821 3533
110-120 Benalla Rd, Shepparton
www.sheppartonmarketplace.com.au

Find everything you need with ease

- Everyday fashion
- Lifestyle
- Services
- Homewares
- General retail
- Fresh food
- Take away
- Kids entertainment

Shepparton
Marketplace



RIVERSIDE PLAZA



Family friendly shopping centre where you can shop with ease in a relaxed and friendly atmosphere with free undercover parking. Large indoor dining space with a soft play area for kids aged 0-5 years.

Home to Coles supermarket, as well as over 20 specialty stores including cafes, bakery, butcher, homeware, chemist, newsagent, hairdresser, massage parlour, nail salon plus Harvey Norman, Baby Bunting, Cellarbrations and KFC.

(03) 5822 8800
8025 Goulburn Valley Hwy, Kialla
www.riversideplazashepparton.com.au



SPC FACTORY SALES



SPC Factory Sales is your local direct to the public factory outlet. Stocking a huge range of discounted brand name products, including SPC, IXL, Mr D's, Taylor's Sauces, Cadbury and Billson's plus many more.

New products arrive daily, plus we have our regular range at fantastic prices. Buy bulk and save even more.

Open 7 days a week with free parking.

** Only closed on Good Friday, ANZAC Day, Christmas Day, Boxing Day and New Year's Day.*

Mon to Fri 9am - 6pm
Sat & Sun 9am - 5pm
plus most public holidays*

(03) 5821 7033
197-205 Corio St, Shepparton
www.spcfactorysales.com.au





THE NUT MAN



(03) 5821 8571
25 Clarke St, Shepparton
www.thenutman.com.au

With more than 300 premium products to choose from, the delicious selection includes nuts, dried fruits, herbs and spices, oils, flours, seeds and beans.

Visit them instore or place orders by phone or online.



DOOKIE EMPORIUM ANTIQUES & CAFE



48 Mary St, Dookie. Phone 0427 538 667

Set in the large, historic Mt Major Co-Op store, the Dookie Emporium is a treasure trove. Be amazed by the variety of things for sale, including historical militaria and army surplus. There's even a café serving superb coffee, all day breakfast, delicious lunches and irresistible cakes and slices.

Open Fri to Sun, 9am - 5pm and public holidays.



MURTAGH'S MARKET



0429 301 872
95-101 Hogan St, Tatura

Wander through Murtagh's Market, located on the main street of Tatura. You will find antiques, collectables, furniture, signs and other unique items to add to your collection or purchase a special gift for someone else.

Open Tue to Fri 10am - 4pm and
Sat and Sun 10am - 2pm.



Scan the QR code to view online.

INTERACTIVE MAPS

Discover the region's incredible destinations, unique attractions and top cultural spots with our collection of curated maps, guides and itineraries.



THE PLAYLAB



The PlayLab is a Co-working space and business hub in Shepparton where you can hire a space for a day or a year. Whether you're in need of a private space to use while stopping through town or a collaborative workspace for a team meeting in our Einstein board-room, there's plenty to suit you and your business.

Start your day in a co-working space where you can make things happen, grow your business and find time to play. We have dedicated desks, rooms and offices that ensure collaboration and inspire innovation. Every corner encourages productivity and growth for freelancers, business starters and growing communities.

Services include:

- Wi-Fi Internet
- Access to reception services
- Full kitchen & lounge area
- Friday afternoon drinks & game of pool
- After hours access with a permanent membership

(03) 58317529
196 High St, Shepparton
Mon to Fri 9am - 5pm

www.theplaylab.com.au
play@theplaylab.com.au





ADDISON MOTOR INN

The Addison is ideally situated between the town centre and the hospitals, and is close to the Sports Stadium. It is approximately a 5 minute walk to the city centre and a quick drive to Victoria Park Lake and the Shepparton Art Museum.

With accommodation for both corporate business and leisure travellers. The Addison has a range of 4 star rooms including Superior rooms with cooking facilities and Executive rooms with microwaves. Room options include: Queen, King, Twin, and Family.



(03) 5831 8280
33-37 Wyndham St, Shepparton
info@addisonmotorinn.com.au
www.addisonmotorinn.com.au



QUALITY HOTEL PARKLAKE

Centrally located opposite Victoria Park Lake, within a few minutes' walk of Shepparton's business district, the Parklake offers everything you need. With 97 modern and sophisticated rooms, the Parklake offers a superb choice of accommodation including Apartments with full cooking facilities, Suites, Spa rooms, Family and Deluxe rooms, and our brand new King Executive rooms. If you can tear yourself away from the Cafe-Bar-Restaurant and its fabulous food and coffee, you will enjoy the resort-style fun of a swimming pool, spa, sauna, gym and BBQ area.



(03) 5821 5822
481 Wyndham St, Shepparton
www.parklake.com.au



BELL TOWER MOTOR INN

Located in south Shepparton near McDonalds is the Bell Tower Motor Inn. The family owned and operated bed and breakfast motel consisting of 19 comfortable well appointed air conditioned suites, each with an ensuite and kitchenette with tea/coffee making facilities, a fridge and a microwave.

The suites cater for single, double, twin or triple share and family rooms, all with Foxtel and WiFi available in each room.

Belltower Motor Inn is a short 5-minute drive from Shepparton's town centre. The property offers an outdoor pool, BBQ facilities, kids playground, room service and free on-site parking.



(03) 5821 8755
587 Wyndham St, Shepparton
www.belltowermotorinn.com.au



QUEST SHEPPARTON

Quest Shepparton offers guests a relaxed and comfortable accommodation experience. Located close to the CBD and Victoria Park Lake, this well-appointed property features a combination of studio, one, two and three-bedroom apartments. Apartments feature a spacious living/dining area (excluding studios), 55" smart tv's, controlled airconditioning/heating, fully equipped kitchen and laundry facilities (kitchenette in studios) and complimentary unlimited Wi-Fi. All guests have access to an off-site 24hr gymnasium.



(03) 5814 4800
177-183 Welsford St, Shepparton
questshepparton@questapartments.com.au
www.questshepparton.com.au












Home away from home

Long and short-term stays welcome with no fuss self check-in. Make yourself right at home from the moment you step in the door.



Apartment amenities for your convenience

-  Self check-in
-  1, 2, 3, 4 or 5 bedrooms
-  Smart TVs
-  Free WiFi
-  Fully equipped kitchens
-  Laundry
-  Essentials & Linen
-  Heating & Cooling
-  Private parking



1 Bedroom	2 Bedroom	3 Bedroom	4 Bedroom	5 Bedroom
1 Queen	1 King 1 Queen	1 King 2 Queens	2 Kings 2 Queens	2 Kings 2 Queens 1 Double

Superior quality serviced apartments located around Shepparton

With more than 30 apartments in the group, L'barza Apartments range from spacious single storey units or double storey townhouses to full family-sized houses with backyards. There's even a beautiful farm stay in Kialla.

Everything is supplied with no bills to pay. All apartments are spacious with modern decor and furniture featuring a full kitchen and laundry. Our one bedroom apartments have undercover private parking, whilst the other apartments have lock up garages.

If you plan to visit Shepparton in the thriving Goulburn Valley region, we invite you to stay with us and let our friendly team exceed your expectations!



1300 799 377
8am-6pm weekdays
enquiries@lbarza.com.au
www.lbarza.com.au





RODNEY MOTOR INN

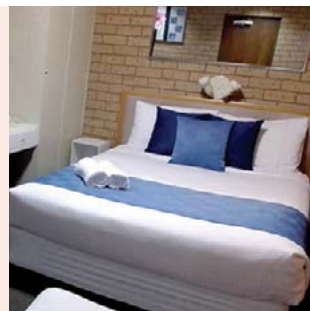


Rodney Motor Inn is located in the main street of Mooroopna with a large variety of eating places all within a short walk, along with supermarkets across the road.

Accommodating for groups, families, business, couples and singles with 20 rooms from standard to spa rooms and 2 bedroom family units. All rooms feature free WiFi, split system air conditioning, kitchenette, flat screen TV with Foxtel and off street parking.

The facilities include a swimming pool and spa, BBQ area and guest laundry.

(03) 5825 3188
 146 McLennan St, Mooroopna
 rodneymotorinn@gmail.com
 www.rodneymotorinn.com.au



COUNTRY HOME MOTOR INN

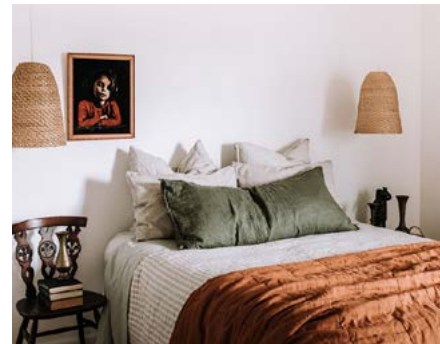


Country Home Motor Inn is a family owned motel, located on the main street of Shepparton. Come and experience quiet, comfortable accommodation at a great price. Rooms are all on ground level with new queen size beds, reverse cycle air-conditioning, Foxtel and free WiFi.

Facilities also include an undercover BBQ area, swimming pool, onsite car park with truck or trailer parking upon request.

(03) 5821 7711
 11 Wyndham St, Shepparton
 www.countryhomemotorinn.com.au

Country Home
 — Motor Inn —



MISS BOULEVARD



108 The Boulevard, Shepparton
 www.townandcountrystays.com

Fully self contained / 3 bed / 2 bath / pet friendly

Experience the relaxed and welcoming climate controlled, art deco style, luxurious linens and a curated collection of furniture and artworks at Miss Boulevard. Perfect for couples, groups, families, work or travel with friends.

Image by Bec Haycraft.



THE STOREKEEPERS HOUSE

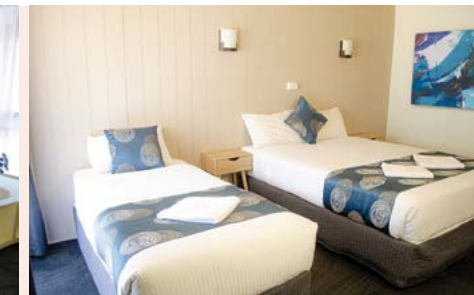


58 Hogan St, Tatura
 www.thestorekeepershouse.com.au

Fully self contained / 3 bed / 2 bath / pet friendly

Named in 2023 one of Australia's dream stays by Country Style Magazine, come discover for yourself the charm of the Storekeeper's House. Luxurious linens, four poster bed, claw footed bath, wood fire in the charming small town of Tatura.

Image by Abbie Melle.



TATURA COUNTRY MOTEL



- Queen, Twin & Family rooms available
- 4 bedroom self-contained executive apartment
- Fully refurbished rooms
- Large outdoor BBQ area
- Set on approx. 2 acres with plenty of room for trucks, trailers, & extra vehicles
- Quiet location close to the town centre
- Only 15 mins to Shepparton
- Multi award-winning Motel

(03) 5824 1155
 9 Ferguson Road, Tatura
 tcmbookings@outlook.com
 www.taturacountrymotel.com.au





ACACIA GARDENS CARAVAN PARK



(03) 5825 2793
6705 Midland Hwy, Mooroopna
www.acaciagardenscaravanpark.com.au

Located 3km west of Mooroopna, with a country atmosphere, deluxe 2 and 3 bedroom cabins and standard 1 bedroom cabins. Linen provided in all cabins. Large drive-through ensuite sites, swimming pool, café and undercover BBQs.



RIVERSIDE CABIN PARK



(03) 5823 1561
8049 Goulburn Valley Hwy, Kialla
stay@riversideparkshepparton.com.au
www.riversidecabinpark.com.au

Located next to Riverside Plaza and the Broken River, Riverside Cabin Park features self-contained deluxe, studio and spa cabins plus deluxe and family villas all with fully equipped kitchens and bathrooms.

Outside there is a spacious undercover alfresco area with 2 BBQs and seating for around 40 people. In the warmer months visitors can enjoy the outdoor swimming pool.

One parking space is provided at all cabins, plus extra parking available for trucks, trailers and buses.



PINES COUNTRY CLUB MOTOR INN



(03) 5831 2044
103 -109 Numurkah Rd, Shepparton
www.pinescountryclubmotorinn.com.au

Built around a central courtyard and tropical garden located in north Shepparton, this motel offers spacious queen, family and spa rooms. Facilities include a swimming pool with spa plus a BBQ area and free car parking.



SHEPPARTON GOLF CLUB MOTEL



- 11 units and 1 two-bedroom apartment, all with car parking
- Expansive views overlooking the beautiful 18th green
- Units upstairs have their own private balcony, while ground level units have private sitting areas and immediate access straight onto the 18th green
- All this located within 30 meters of the 1st and 10th tees
- Motel is adjacent to the bar, dining room and Pro Shop
- Motel is available for all guests, no golf booking is required

(03) 5821 2717
Motel Office Hours
Mon to Fri 9am - 5.30pm
Golf Drive, Shepparton
www.sheppartongolf.net.au
motel@sheppartongolf.net.au



THE CARRINGTON



(03) 5821 3355
505 Wyndham St, Shepparton
info@thecarrington.net.au
www.thecarrington.net.au

The Carrington is centrally located overlooking Victoria Park Lake and offers guests an experience of four-star luxury and style, close to the Shepparton CBD and Shepparton Art Museum.

The Carrington features executive suites and spa rooms offering stylish and modern accommodation that blends comfort and luxury.

In addition to beautiful accommodation, the hotel also offers guests and the public alike a fine selection of food and beverages, with fine cuisine served in the restaurant.





THE BLACK BULL



Located within walking distance from Mooroopna CBD, The Black Bull offers accommodation for long and short term stays.

There are 1 or 2 bedroom units, accommodating up to 6 people, and powered sites available.

On-site facilities include laundry room, camp kitchen, toilet and shower blocks, resort style pool and sand pit.

Access to free WiFi is also available.

0438 776 492
220 McLennan St, Mooroopna



GETTING HERE



A scenic two-hour drive from Melbourne, nestled at the junction of the Goulburn and Broken Rivers is Shepparton and Goulburn Valley.

Offering a convenient and central location whether you're travelling Sydney to Adelaide, or heading north from Melbourne. Whether you're in a group, with family, travelling alone with or without a caravan, the well-connected road network ensures an enjoyable journey to this vibrant region. Alternatively, take advantage of improved rail connectivity and take one of the daily train services.



TATURA RV REST STOP

(03) 5832 9330
Douglas St Car Park, Tatura
www.sheppandgv.com.au

The free RV rest stop in Tatura provides three 48 hour limit parking bays for fully self-contained vehicles to welcome travellers to Tatura. The location is in close proximity to Tatura's main street and the many eateries and shops on offer.



FREE DUMP POINTS

Shepparton Showgrounds
Fryers St (entry via Archer St)
Tatura Park Exhibition and Events Complex
Hastie St, Tatura (pictured)
www.sheppandgv.com.au

Public dump points are the most environmentally friendly method for users of caravans and RVs to dispose of their grey and black water, as well as sewage waste.



BALFOURS AIRPORT DIRECT

5 Huggard Dr, Mooroopna (03) 5825 3861
info@balfoursairportdirect.com.au
www.balfoursairportdirect.com.au

The region's only airport shuttle service direct from Shepparton to Tullamarine Airport and return, twice daily. Pick up and drop off points at Mooroopna, Shepparton, Kialla, Murchison, Nagambie, Seymour, Broadford, Kilmore and Wallan. Bookings are essential. Charter and self-drive buses available for hire.

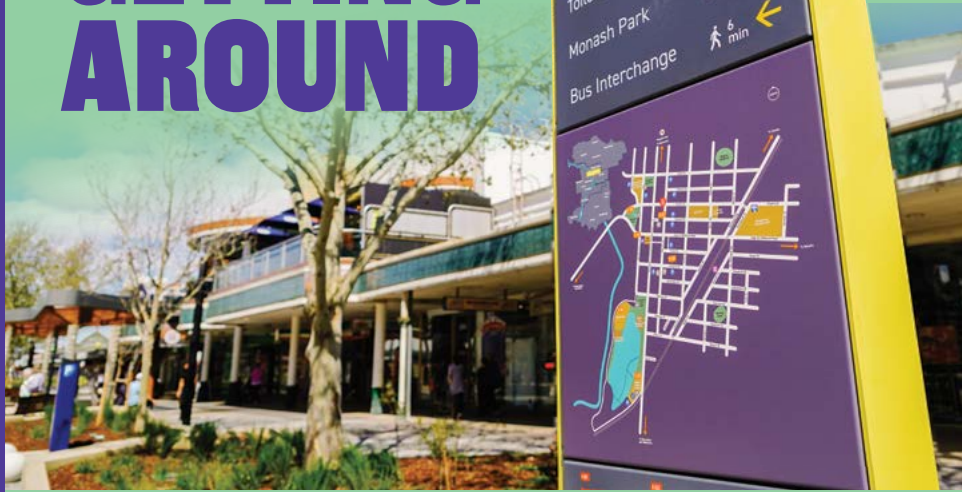


FORDS BUS SERVICE

(03) 5821 3777
19 Wheeler St, Shepparton
fordsbus@fordsbus.com.au
www.fordscoachtravel.com.au

Fords Shepparton Bus Service is a family run business who cater to a wide range of day trips, concerts and tours with pick ups from various towns. Charter buses and self drive mini buses, are available for all your travel requirements.

GETTING AROUND



Shepparton and Goulburn Valley boasts a wide range of services and amenities, catering to all your needs.

From shopping and dining to entertainment and recreational activities, this region has it all.

Embark on your journey to Shepparton and Goulburn Valley, uncover a captivating blend of diverse communities, urban convenience, and the blissful rural tranquillity that awaits you.

Should you require any assistance or information, the friendly staff at the Visitor Centre are there to provide guidance and answer any queries you may have.

For more details, feel free to visit www.sheppandgv.com.au or contact them directly at 1800 808 839.

EV CHARGERS

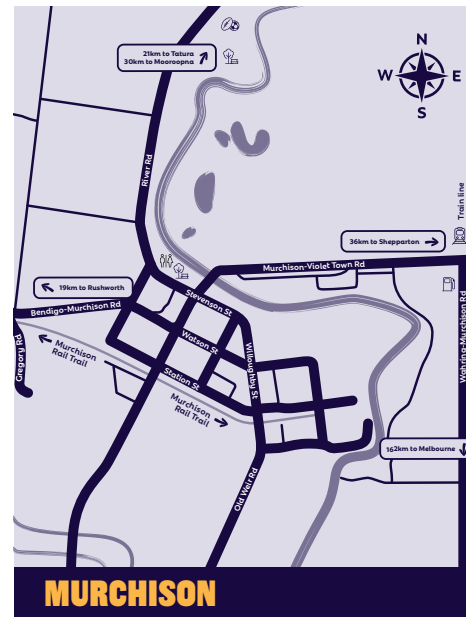
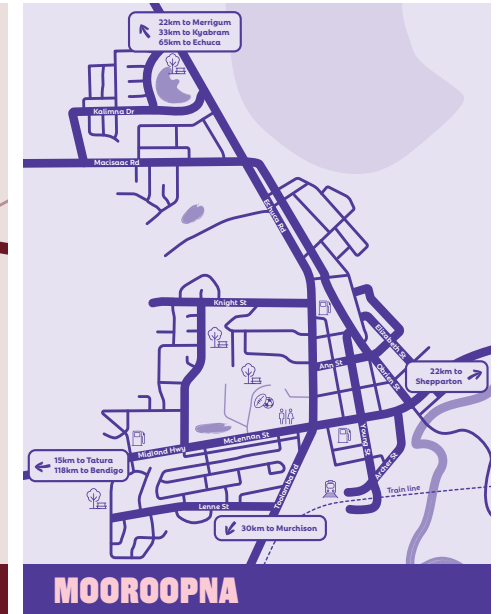
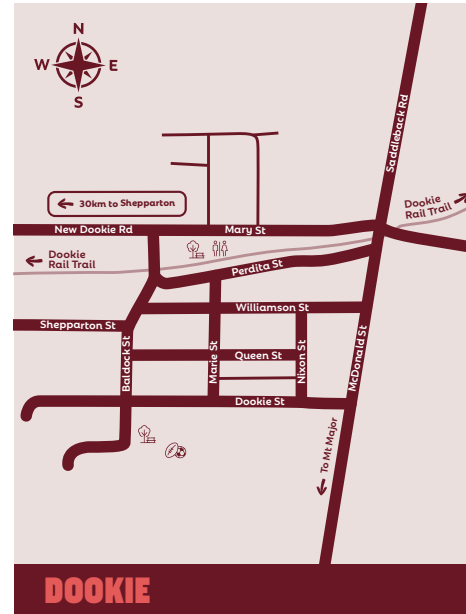
Various locations around Shepparton and the Goulburn Valley www.sheppandgv.com.au

There are various free, timed and paid EV charging points across the Goulburn Valley. Petrol and Diesel vehicles are not permitted to use these parks. Please visit the Shepparton and Goulburn Valley website for more information on locations and fees.

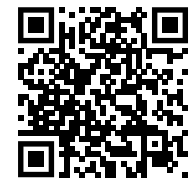


Places to explore

Map key: Recreation Reserve Off Street Parking Petrol Station Parks/Playground Public Toilets Train Station



Explore our Region



Scan QR Code to view our interactive maps.

Explore Shepparton

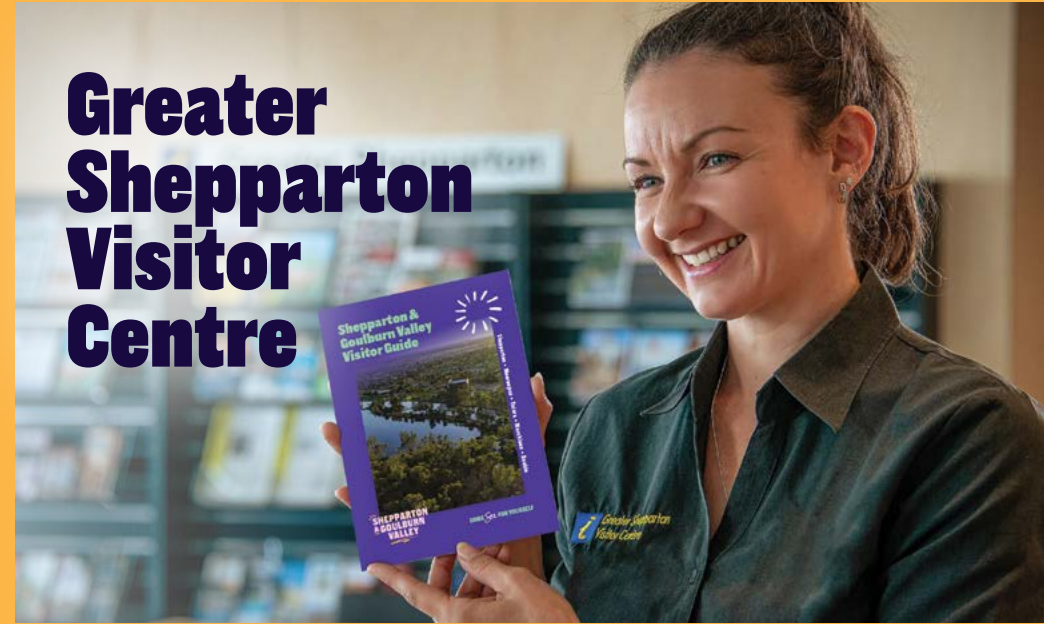
- Map key: Recreation Reserve Off Street Parking Petrol Station Parks/Playground Public Toilets Train Station



Scan QR Code to view more of Shepparton on our interactive maps.



Greater Shepparton Visitor Centre



INFORMATION HUB

- Local friendly experts sharing quality up-to-date information on where to stay, eat and drink, places to see, thing to do
- Events, festivals and entertainment information
- Brochures, maps and guides

GIFT SHOP

- Local merchandise and produce
- Gifts and hampers
- Souvenirs
- Historical and other books



GREATER SHEPPARTON VISITOR CENTRE

530 Wyndham St, Shepparton (Ground floor, SAM building)
Open 9am - 5pm every day (closed Christmas Day)

(03) 5832 9330 / 1800 808 839

info@sheppandgv.com.au
sheppandgv.com.au





Shepparton Art Museum (SAM) is an outstanding regional art museum located on Yorta Yorta Country, overlooking Victoria Park Lake.

With enriching exhibitions, engaging programs and a shop and café on site, SAM is an experience not to be missed.

FREE ENTRY.

Open 6 days. Closed Tuesdays.
Weekdays 10am - 4pm. Weekends 10am - 5pm.
Phone (03) 4804 5000
530 Wyndham St, Shepparton VIC 3630

sam
Shepparton Art Museum



Image courtesy John Gollings AM © John Gollings Photography.

sheppartonartmuseum.com.au